



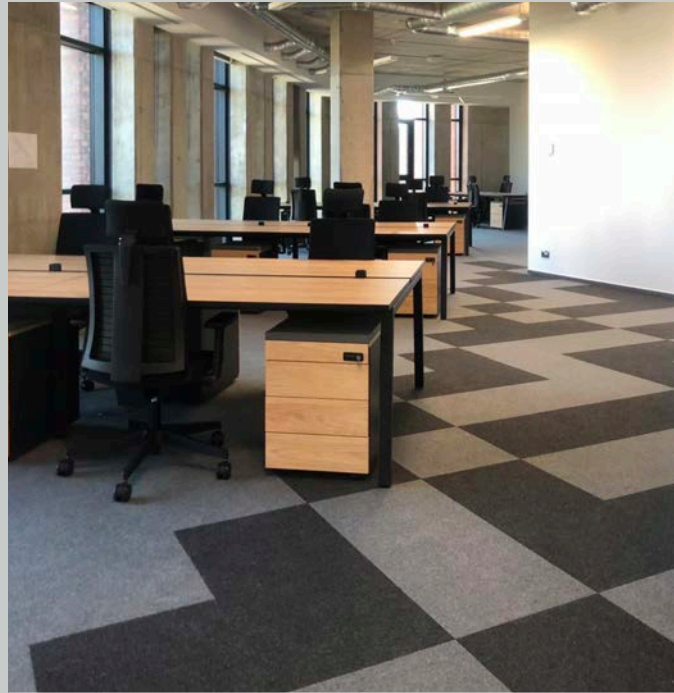
Product Catalogue  
**Burmatex®**

MANUFACTURERS OF CREATIVE FLOORING 

arctic® blue water, marine ravine, moonrise blue, norske grey

January 2024





We are passionate about making our flooring products and aim to create truly inspirational environments for people to enjoy





**Burmatex®** offers an expansive product range; our traditional fibre bonded sheet and tile ranges include entrance products and ground-breaking structure bonded ranges, which present an expansive colour palette. Our multilevel loop, low level loop, textured loop and cut pile tufted carpet tile ranges, including a specialist entrance barrier product, are inspired by the latest and predicted future design and colour trends.

**Burmatex®** is a leading UK manufacturer of contract carpets and carpet tiles. We are passionate about creating truly inspirational environments, reflected in our products unique nature across both design and manufacture.

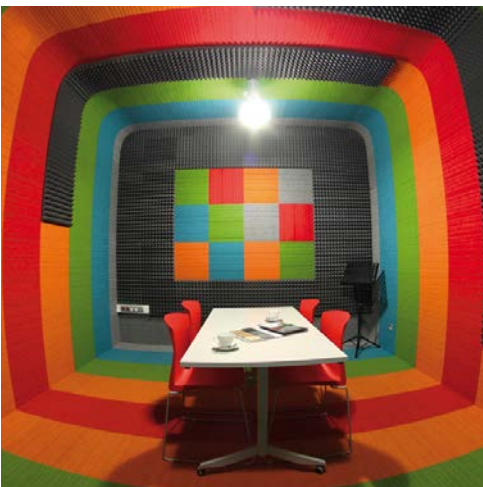
Our products are suitable for use in heavy contract markets and used in a wide variety of private and public sector buildings, including schools, offices, universities and leisure centres.



The **Burmatex®** design team are a driving force in developing product ranges which reflect colour and design trends as well as creating exclusive, bespoke carpet tiles to meet customers' needs and providing our free planned flooring layout design service.



**Burmatex®** is committed to best environmental practice in our manufacturing, from the sourcing of raw materials, including recycled content, minimising emission of CO<sub>2</sub> and reprocessing waste, use of green electricity and recycled packaging. Our product are now EPD verified by an independent third-party verification of the declaration and data, according to ISO 14025:2006.

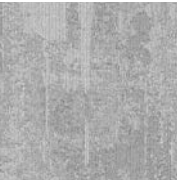


We hope that by reading our catalogue and visiting our website at **[www.burmatex.co.uk](http://www.burmatex.co.uk)**, we will inspire you to work with us to create really unique, captivating floor designs.

**Burmatex®** is a BS EN ISO 9001:2000 registered company (Cert No.FM1440). All products are tested to BSI/CEN standards in relation to durability, wear, flame retardancy, antistatic properties and colour fastness.



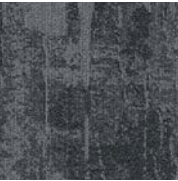




34504 glacial grey tile  
34604 glacial grey plank



34503 norse grey tile  
34603 norse grey plank



34502 cool storm tile  
34602 cool storm plank



34501 polar black tile  
34601 polar black plank



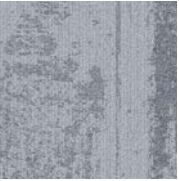
34510 seal grey tile  
34610 seal grey plank



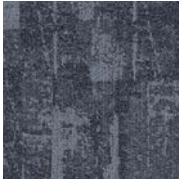
34511 hail stone tile  
34611 hail stone plank



34512 oslo fog tile  
34612 oslo fog plank



34506 ice blue tile  
34606 ice blue plank



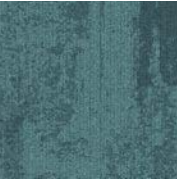
34505 blue water tile  
34605 blue water plank



34507 moonrise blue tile  
34607 moonrise blue plank



34508 coastal mist tile  
34608 coastal mist plank



34509 marine ravine tile  
34609 marine ravine plank



carbon negative  
recycled yarn



BioBase®  
backing



carbon  
neutral

#### Specification

**Product Description:** Multilevel Loop

**Pile Yarn Description:** Universal Fibers® Thrive® matter yarn

**Tile Dimensions:** 50 cm x 50 cm

**Pile Height:** 4.5mm

**Total Thickness:** 7mm

**Pile Weight:** 624g/m²

**Tufts per m²:** 26,771/m²

**Castor Chair Rating:** BS EN 985 Pass

**Body Voltage Test:** BS ISO 6356:2000 <2kV

**Colour Fastness To Light:** Minimum grade 6

**Flammability:** Euroclass Bfl-s1



## arctic® tile/plank

**arctic®** is inspired by the changing landscape of the Arctic region. Organic lines cutting through icy rock, cold water flowing down frozen mountains and glacial river rapids inspire the movement in the design.

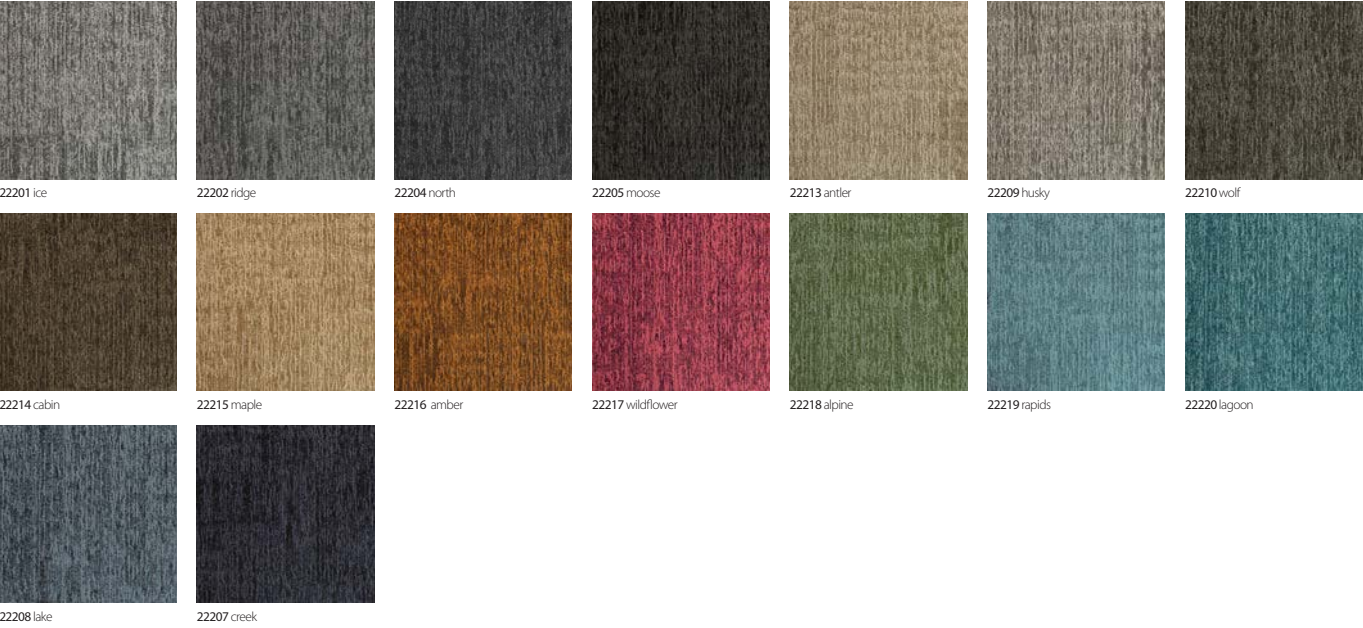
The colour palette consists of 12 colours inspired by the natural elements of the Arctic - ice blues and cool greys amongst soft subtle warms, with marine-like green tones to further enhance the collection.

**arctic®** is available in both tile and plank, allowing you the freedom to express arctic in either option, creating unique structures and patterns to suit your project.

## eco<sub>2</sub>matters®

Made from Universal Fibers® Thrive® matter yarn, the world's first **carbon negative recycled** yarn, and our unique **BioBase® recycled** backing, **arctic®** is **carbon neutral**.





100% Econyl®



BioBase®  
backing



low  
carbon

#### Specification

**Product Description:** Multilevel Loop  
**Pile Yarn Description:** 100% Econyl® regenerated recyclable solution dyed nylon yarn  
**Tile Dimensions:** 50 cm x 50 cm  
**Pile Height:** 5 mm  
**Total Thickness:** 7.5 mm  
**Pile Weight:** 800 g/m²  
**Tufts per m²:** 226,771/m²  
**Castor Chair Rating:** BS EN 985 Pass  
**Body Voltage Test:** BS ISO 6356:2000 <2kV  
**Colour Fastness To Light:** Minimum grade 6  
**Flammability:** Euroclass Bfl-s1



# alaska®

**alaska®** is our first multilevel loop product and its name was also our inspiration.

**alaska®** is a timeless and tactile design, inspired by the natural textures found in the Alaskan landscape. The expansive biophilic palette and luxurious rippled effect is an ideal choice for commercial interiors.

**alaska®** tiles are available in 16 colours.

## eco<sup>2</sup>matters®

Made from 100% **Econyl® regenerated recyclable** solution dyed nylon yarn and our unique **BioBase® recycled** backing, **alaska®** is **low carbon**.





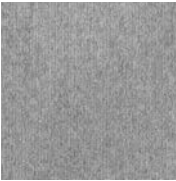
34001 steel tower



34002 warm frost



34003 concrete lead



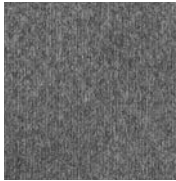
34004 granite vapour



34005 city clay



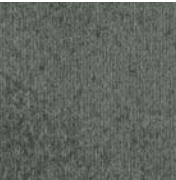
34006 skylight beam



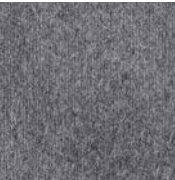
34011 twilight dawn



34008 urban nickel



34010 sage vista



34007 harbour view



34009 river dew



34012 navy shore



carbon negative  
recycled yarn



BioBase®  
backing



carbon  
neutral

#### Specification

**Product Description:** Multilevel Loop  
**Pile Yarn Description:** 100% Solution Dyed Nylon 6 (Polyamide-PA)  
**Tile Dimensions:** 50 cm x 50 cm  
**Pile Height:** 4.5 mm  
**Total Thickness:** 7.0 mm  
**Pile Weight:** 628 g/m²  
**Tufts per m²:** 226,771/m²  
**Castor Chair Rating:** BS EN 985 Pass  
**Body Voltage Test:** BS ISO 6356:2000 <2kV  
**Colour Fastness To Light:** Minimum grade 6  
**Flammability:** Euroclass Bfl-s1



## balance grade®

**balance grade®** is inspired by misty Chicago mornings where the dew is fresh from Lake Michigan. It is a soft and subtle design which leaves a calming effect across the floor. It is complemented by the other two ranges in the balance collection: **balance grid®** and **balance ground®**.

## eco<sub>2</sub>matters®

Made from Universal Fibers® Thrive® matter yarn, the world's first **carbon negative recycled** yarn, and our unique **BioBase® recycled** backing, **balance grade®** is **carbon neutral**.





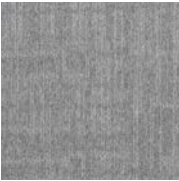
33901 steel grey



33902 warm dusk



33903 concrete core



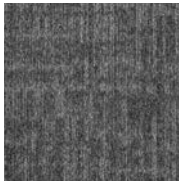
33904 granite mesh



33905 smoky clay



33906 skylight chrome



33911 twilight fog



33908 black nickel



33910 sage glass



33907 harbour cloud



33909 river haze



33912 navy night



carbon negative  
recycled yarn



BioBase®  
backing



carbon  
neutral

#### Specification

**Product Description:** Multilevel Loop  
**Pile Yarn Description:** 100% Solution Dyed Nylon 6 (Polyamide-PA)  
**Tile Dimensions:** 50 cm x 50 cm  
**Pile Height:** 4.5 mm  
**Total Thickness:** 7.0 mm  
**Pile Weight:** 628 g/m²  
**Tufts per m²:** 226,771/m²  
**Castor Chair Rating:** BS EN 985 Pass  
**Body Voltage Test:** BS ISO 6356:2000 <2kV  
**Colour Fastness To Light:** Minimum grade 6  
**Flammability:** Euroclass Bfl-s1



## balance grid®

**balance grid®** is inspired by the strong lines seen in high rise skyscrapers, shining and gleaming. It is a classic yet contemporary design which works alone or paired with the other two designs in the balance collection: **balance grade®** and **balance ground®**.

## eco<sup>2</sup>matters®

Made from Universal Fibers® Thrive® matter yarn, the world's first **carbon negative recycled** yarn, and our unique **BioBase® recycled** backing, **balance grid®** is **carbon neutral**.

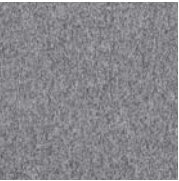




34101 steel



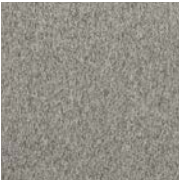
34102 warm



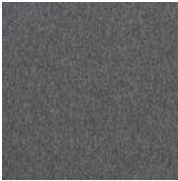
34103 concrete



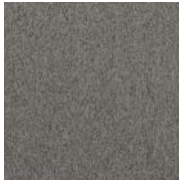
34104 granite



34105 clay



34106 skylight



34108 nickel



34111 twilight



34110 sage



34107 harbour



34109 river



34112 navy



carbon negative  
recycled yarn



BioBase®  
backing



carbon  
neutral

#### Specification

**Product Description:** Multilevel Loop  
**Pile Yarn Description:** 100% Solution Dyed Nylon 6 (Polyamide-PA)  
**Tile Dimensions:** 50 cm x 50 cm  
**Pile Height:** 4.5 mm  
**Total Thickness:** 7.0 mm  
**Pile Weight:** 628 g/m²  
**Tufts per m²:** 226,771/m²  
**Castor Chair Rating:** BS EN 985 Pass  
**Body Voltage Test:** BS ISO 6356:2000 <2kV  
**Colour Fastness To Light:** Minimum grade 6  
**Flammability:** Euroclass Bfl-s1



## balance ground®

**balance ground®** is inspired by the rough texture of sidewalks and pavements that run throughout the city of Chicago. It is strong in tactile elements but soft in colour, designed to give your space some breathing room. When used in conjunction with **balance grid®** and **balance grade®** it is grounding and neutral.

## eco<sub>2</sub>matters®

Made from Universal Fibers® Thrive® matter yarn, the world's first **carbon negative recycled** yarn, and our unique **BioBase® recycled** backing, **balance ground®** is **carbon neutral**.

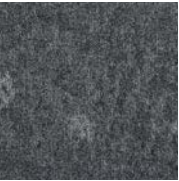




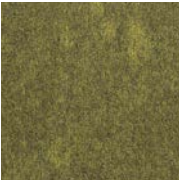
34301 silver gleam



34302 cool breeze



34303 grey zephyr



34304 golden hour



34305 spring seed



34306 airy celadon



34307 luminous blue



34308 vivid navy



34309 midnight violet



34310 inky shade



34311 moonlit glow



34312 dark nimbus



carbon negative  
recycled yarn



BioBase®  
backing



carbon  
neutral

#### Specification

Product Description: Multilevel Loop

Pile Yarn Description: Universal Fibers® Thrive® matter yarn

Tile Dimensions: 50 cm x 50 cm

Pile Height: 5.2 mm

Total Thickness: 7.0 mm

Pile Weight: 678 g/m²

Tufts per m²: 236,220/m²

Castor Chair Rating: BS EN 985 Pass

Body Voltage Test: BS ISO 6356:2000 <2kV

Colour Fastness To Light: Minimum grade 6

Flammability: Euroclass Bfl-s1



# dapple®

**dapple®**'s organic design echoes the effect of light being filtered through trees and scattered onto the forest floor. Inspired by nature, the 12 colour palette helps you connect your built interior to the natural environment.

## eco<sub>2</sub>matters®

Made from Universal Fibers® Thrive® matter yarn, the world's first **carbon negative recycled** yarn, and our unique **BioBase® recycled** backing, **dapple®** is carbon neutral.





22813 hikari



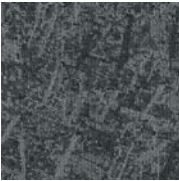
22802 sesame



22809 mochi



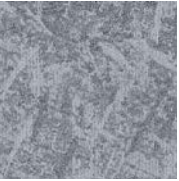
22805 arashi



22814 kumo



22803 sumi



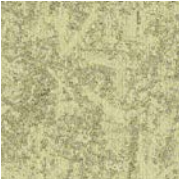
22819 kori



22816 sora



22818 chiru



22817 ginkgo



22815 kawa



22820 hanabi



carbon negative  
recycled yarn



BioBase®  
backing



carbon  
neutral

#### Specification

**Product Description:** Multilevel Loop

**Pile Yarn Description:** Universal Fibers® Thrive® matter yarn

**Tile Dimensions:** 50 cm x 50 cm

**Pile Height:** 5 mm

**Total Thickness:** 7.5 mm

**Pile Weight:** 695 g/m²

**Tufts per m²:** 226,771/m²

**Castor Chair Rating:** BS EN 985 Pass

**Body Voltage Test:** BS ISO 6356:2000 <2kV

**Colour Fastness To Light:** Minimum grade 6

**Flammability:** Euroclass Bfl-s1



## osaka®

**osaka®** is an all over pattern inspired by an incredibly vibrant, futuristic, and traditional part of the world, Japan. The contrasts found in Japan inspire the range; new and old, warm and cool, urban and natural.

Initially inspired by a map of Osaka the carpet tile design is geometric yet organic, reminiscent of folded paper origami. Whether looking down on the busy metropolitan streets or up at the forest canopies, you can see the pattern of **osaka®** appear in both city and natural settings.

The abstract nature of the design, teamed with the revived colour palette, allows it to be both soft and strong, expertly working with modern interior spaces.

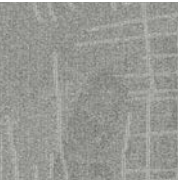
## eco<sub>2</sub>matters®

Made from Universal Fibers® Thrive® matter yarn, the world's first **carbon negative recycled** yarn, and our unique **BioBase® recycled** backing, **osaka®** is carbon neutral.

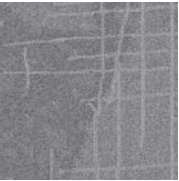




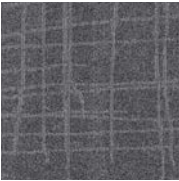
31906 grey linen



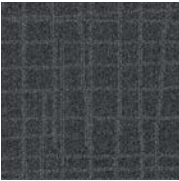
31908 cotton canvas



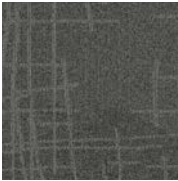
31901 silk white



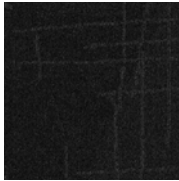
31902 silver pear



31903 after dark



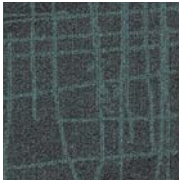
31904 crushed cord



31905 liquorice lace



31910 golden slice



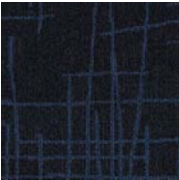
31911 minty mesh



31912 deep pistachio



31907 blue velvet



31909 satin sapphire



#### Specification

**Product Description:** Multilevel Loop  
**Pile Yarn Description:** 100% Solution Dyed Nylon 6 (Polyamide-PA)  
**Tile Dimensions:** 50 cm x 50 cm  
**Pile Height:** 5mm  
**Total Thickness:** 7.5 mm  
**Pile Weight:** 774 g/m<sup>2</sup>  
**Tufts per m<sup>2</sup>:** 250,393/m<sup>2</sup>  
**Castor Chair Rating:** BS EN 985 Pass  
**Body Voltage Test:** BS ISO 6356:2000 <2kV  
**Colour Fastness To Light:** Minimum grade 6  
**Flammability:** Euroclass Bfl-s1



# vibe®

**vibe®** is inspired by torn netted structures with areas of strong pattern breaking away into sections of plain. Whilst the grid is the main feature of the design, underneath are subtle broken shapes created from torn and folded papers. This building of layers within the design creates a luxurious, velvet like appearance.

The vibrant palette of 12 colours provides colour on grey and tonal options. The four core greys make up the background to the colour on greys with the grid pattern taking the colour. From pastel tones to bright pops of highlight, is it suitable for all manner of interiors and installations.

## eco<sub>2</sub>matters®

Made from 100% Solution Dyed Nylon 6 and our unique **BioBase® recycled** backing, **vibe®** is **low carbon**.





34201 silver pitch



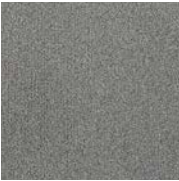
34202 zinc facet



34203 grey horizon



34204 gold patina



34205 light angle



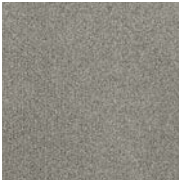
34206 sky tint



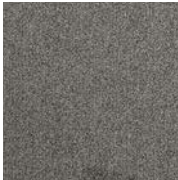
34207 blue facade



34208 coal layer



34209 clay screen



34210 metal edge



34211 green space



34212 ash profile



#### Specification

**Product Description:** Multilevel Loop  
**Pile Yarn Description:** 100% Solution Dyed Nylon 6 (Polyamide-PA)  
**Tile Dimensions:** 50 cm x 50 cm  
**Pile Height:** 5 mm  
**Total Thickness:** 7.5 mm  
**Pile Weight:** 770 g/m<sup>2</sup>  
**Tufts per m<sup>2</sup>:** 259,842/m<sup>2</sup>  
**Castor Chair Rating:** BS EN 985 Pass  
**Body Voltage Test:** BS ISO 6356:2000 <2kV  
**Colour Fastness To Light:** Minimum grade 6  
**Flammability:** Euroclass Bfl-s1



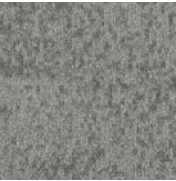
## tiltnturn®

**tiltnturn®** is a 770g product which reflects the amazing effects of light and shadow which surround us every day. The design and the colour palette are inspired by how light catches different planes within architectural structures, creating changing shadows and varying lines.

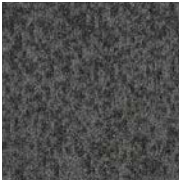
## eco<sub>2</sub>matters®

Made from 100% Solution Dyed Nylon 6 and our unique **BioBase® recycled** backing, **tiltnturn®** is **low carbon**.





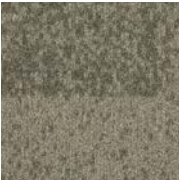
22901 light



22902 shade



22903 dark



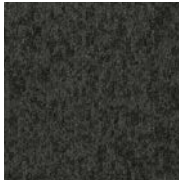
22905 stone



22909 birch



22906 pave



22907 ground



22908 brick



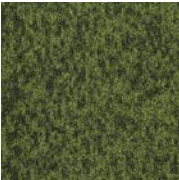
22911 bloom



22910 air



22904 deep



22912 leaf



100% Econyl®



BioBase®  
backing



low  
carbon

#### Specification

**Product Description:** Multilevel Loop

**Pile Yarn Description:** 100% Solution Dyed Aquafil Econyl® Nylon (Polyamide-PA)

**Tile Dimensions:** 50 cm x 50 cm

**Pile Height:** 5 mm

**Total Thickness:** 7.5 mm

**Pile Weight:** 910 g/m²

**Tufts per m²:** 236,220/m²

**Castor Chair Rating:** BS EN 985 Pass

**Body Voltage Test:** BS ISO 6356:2000 <2kV

**Colour Fastness To Light:** Minimum grade 6

**Flammability:** Euroclass Bfl-s1



# rainfall®

**rainfall®**'s inspiration was trying to capture those first moments of a summer storm. The first spots of rain punctuate the surface, gathering in intensity until the whole colour is several shades darker.

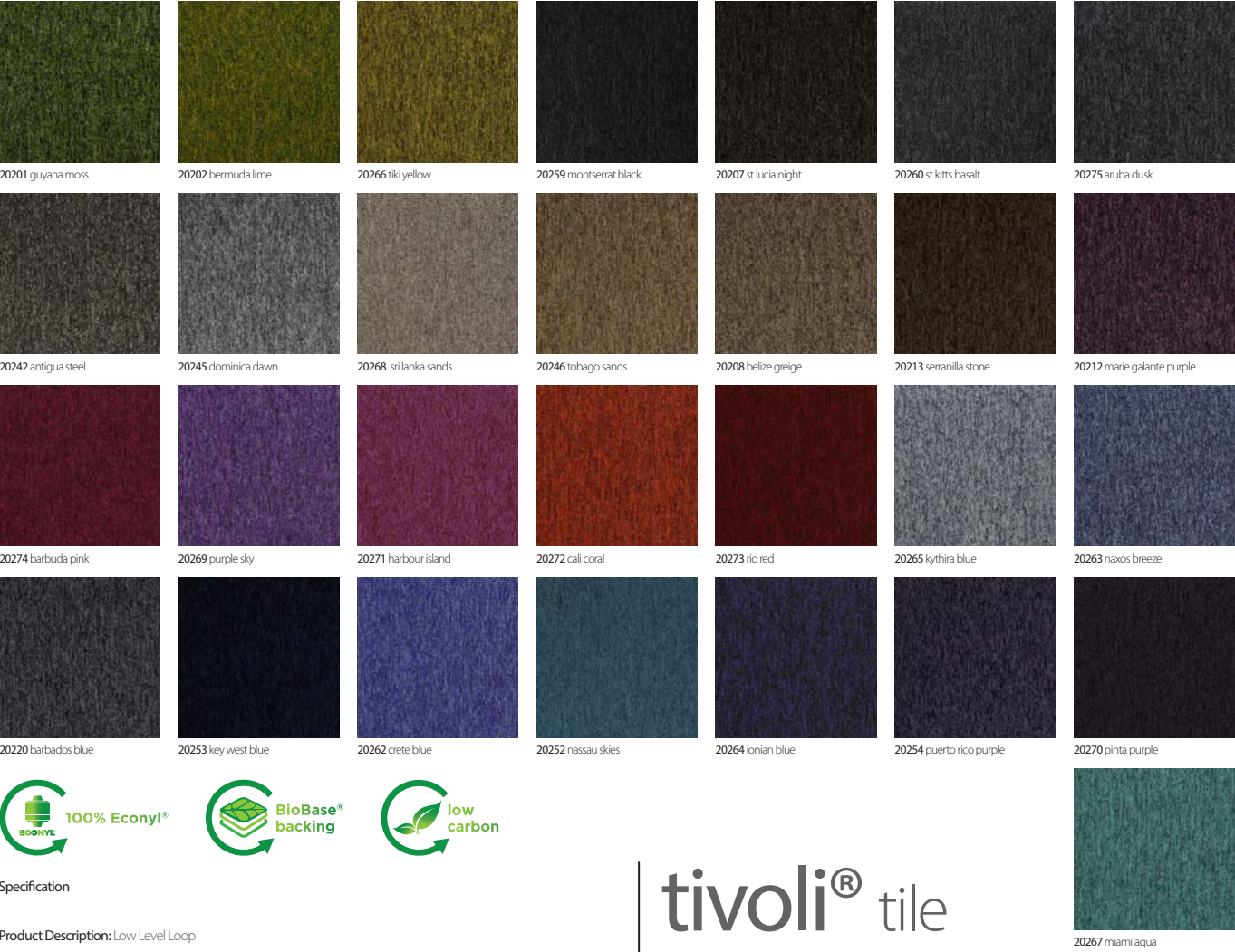
This multilevel loop product encompasses changes of tone in varying proportions throughout, resulting in an all over effect of subtlety combined with soft angles.

These characteristics ensure that each installation of appears slightly different from the last. An enticing palette of 12 colours provides bright and light options, through to more concentrated and atmospheric tones, suitable for all manner of installations and interiors.

## eco<sub>2</sub>matters®

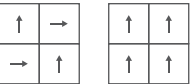
Made from 100% **Econyl® regenerated recyclable** solution dyed nylon yarn and our unique **BioBase® recycled** backing, **rainfall®** is **low carbon**.





Specification

Product Description: Low Level Loop  
Pile Yarn Description: 100% Solution Dyed Nylon (Polyamide-PA)  
Tile Dimensions: 50 cm x 50 cm  
Pile Height: 4 mm  
Total Thickness: 6.5 mm  
Pile Weight: 600 g/m²  
Tufts per m²: 196,500/m²  
Castor Chair Rating: BS EN 985 Pass  
Body Voltage Test: BS ISO 6356:2000 <2kV  
Colour Fastness To Light: Minimum grade 6  
Flammability: Euroclass Bfl-s1



tivoli® tile

tivoli® presents a high performance loop pile (class 33) product offering, made with 100% solution dyed nylon and including **tivoli®** and **tivoli® multiline**.

eco<sub>2</sub>matters®

Made from 100% **Econyl®** regenerated recyclable solution dyed nylon yarn and our unique **BioBase® recycled** backing, **tivoli®** is **low carbon**.

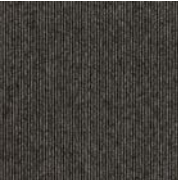




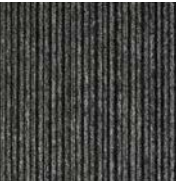
online  
20607 aegean sea



online  
20608 haiti haze



online  
20609 perissa sand



multiline  
20703 melanesia grey



multiline  
20707 tenerife black



multiline  
20711 seychelles beige



multiline  
20709 mediterranean topaz



multiline  
20708 santorini blue



multiline  
20712 cayman purple



multiline  
20713 takutea red



multiline  
20710 everglade green



#### Specification

**Product Description:** Low Level Loop  
**Pile Yarn Description:** 100% Solution Dyed Nylon (Polyamide-PA)  
**Tile Dimensions:** 50 cm x 50 cm  
**Pile Height:** 4 mm  
**Total Thickness:** 6.5 mm  
**Pile Weight:** 600 g/m<sup>2</sup>  
**Tufts per m<sup>2</sup>:** 196,500m<sup>2</sup>  
**Castor Chair Rating:** BS EN 985 Pass  
**Body Voltage Test:** BS ISO 6356:2000 <2kV  
**Colour Fastness To Light:** Minimum grade 6  
**Flammability:** Euroclass Bfl-s1



## tivoli<sup>®</sup> tile (cont.)

Varied plain, **tivoli<sup>®</sup>**, classic pinstripe and contemporary striped, **tivoli<sup>®</sup> multiline**, designs can be used individually or in a bespoke arrangement, with the expansive, modern colour palette enabling classic, neutral schemes or innovative, creative layouts.

## eco<sub>2</sub>matters<sup>®</sup>

Made from 100% **Econyl<sup>®</sup> regenerated recyclable** solution dyed nylon yarn and our unique **BioBase<sup>®</sup> recycled** backing, **tivoli<sup>®</sup>** is **low carbon**.





21101 guayana moss



21102 bermuda lime



21166 tiki yellow



21159 montserrat black



21160 st kitts basalt



21107 st lucia night



21175 aruba dusk



21142 antigua steel



21145 dominica dawn



21168 sri lanka sands



21108 belize greige



21165 kythira blue



21163 navos breeze



21120 barbados blue



21164 ionian blue



21152 nassau skies



21153 key west blue



21169 purple sky



21172 cali coral



21167 miami aqua



multiline  
20703 melanesia grey



multiline  
20707 tenerife black



multiline  
21211 seychelles beige



multiline  
21208 santorini blue



multiline  
21212 cayman purple



multiline  
21209 mediterranean topaz

#### Specification

**Product Description:** Low Level Loop

**Pile Yarn Description:** 100% Solution Dyed Nylon (Polyamide-PA)

**Tile Dimensions:** 25 cm x 100 cm

**Pile Height:** 4 mm

**Total Thickness:** 6.5 mm

**Pile Weight:** 600 g/m<sup>2</sup>

**Tufts per m<sup>2</sup>:** 196,500/m<sup>2</sup>

**Castor Chair Rating:** BS EN 985 Pass

**Body Voltage Test:** BS ISO 6356:2000 <2kV

**Colour Fastness To Light:** Minimum grade 6

**Flammability:** Euroclass Bfl-s1



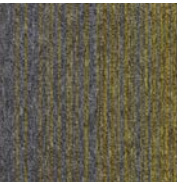
## tivoli® plank

tivoli® carpet planks offer two loop pile designs – a solid colour and a stripe **tivoli® multiline**. This creates a broad palette with complementary colours developing creative installation options.

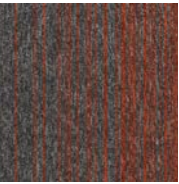
## eco<sub>2</sub>matters®

Made from 100% **Econyl®** regenerated recyclable solution dyed nylon yarn and our unique **BioBase®** recycled backing, **tivoli®** is **low carbon**.

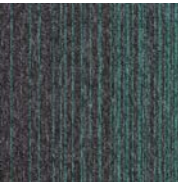




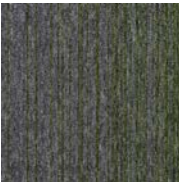
32701 south beach tile  
32901 south beach plank



32702 palm springs tile  
32902 palm springs plank



32703 ocean drive tile  
32903 ocean drive plank



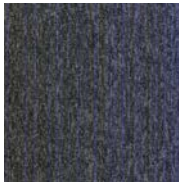
32705 turtle bay tile  
32905 turtle bay plank



32704 havana town tile  
32904 havana town plank



32710 icelandic isle tile  
32910 icelandic isle plank



32711 nordic fjord tile  
32911 nordic fjord plank



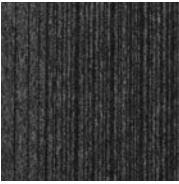
32708 bergen city tile  
32908 bergen city plank



32712 polar drift tile  
32912 polar drift plank



32707 baffin island tile  
32907 baffin island plank



32713 galapagos bay tile  
32913 galapagos bay plank

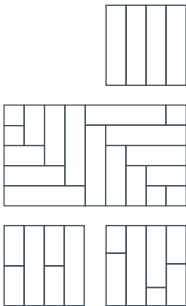
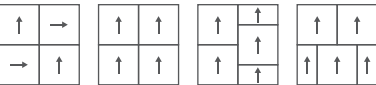


32706 bora bora tile  
32906 bora bora plank



#### Specification

**Product Description:** Low Level Loop  
**Pile Yarn Description:** 100% Solution Dyed Nylon (Polyamide-PA)  
**Tile Dimensions:** 50 cm x 50 cm, 25 cm x 100 cm  
**Pile Height:** 4 mm  
**Total Thickness:** 6.5 mm  
**Pile Weight:** 600 g/m<sup>2</sup>  
**Tufts per m<sup>2</sup>:** 196,500/m<sup>2</sup>  
**Castor Chair Rating:** BS EN 985 Pass  
**Body Voltage Test:** BS ISO 6356:2000 <2kV  
**Colour Fastness To Light:** Minimum grade 6  
**Flammability:** Euroclass Bfl-s1



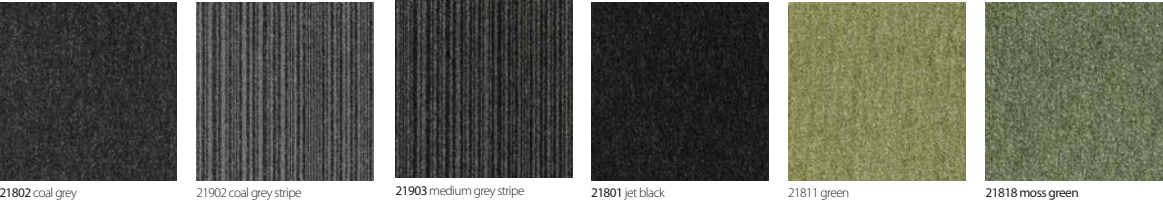
## tivoli mist® tile/plank

**tivoli mist®** offers a flexible range of commercial carpet tiles, designed to provide creativity, colour and individuality. With colour pairings that blend seamlessly together, **tivoli mist®** affords the possibility of transitioning from one zoned area to another without the use of hard lines.

## eco<sub>2</sub>matters®

Made from 100% **Econyl®** regenerated recyclable solution dyed nylon yarn and our unique **BioBase®** recycled backing, **tivoli mist®** is **low carbon**.

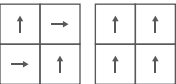




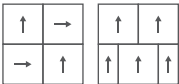
Specification

Product Description: **Low Carbon** Level Loop  
Pile Yarn Description: **EgoCycle® 75 recycled** solution dyed nylon  
Tile Dimensions: 50 cm x 50 cm  
Pile Height: 3.0 mm  
Total Thickness: 5.5 mm  
Pile Weight: 500 g/m²  
Tufts per m²: 196,850/m²  
Castor Chair Rating: BS EN 985 Pass  
Body Voltage Test: BS ISO 63562000 <2kV  
Colour Fastness To Light: Minimum grade 6  
Flammability: Euroclass Bfl-s1

go to



go to stripe



# go to®

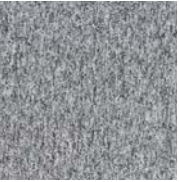
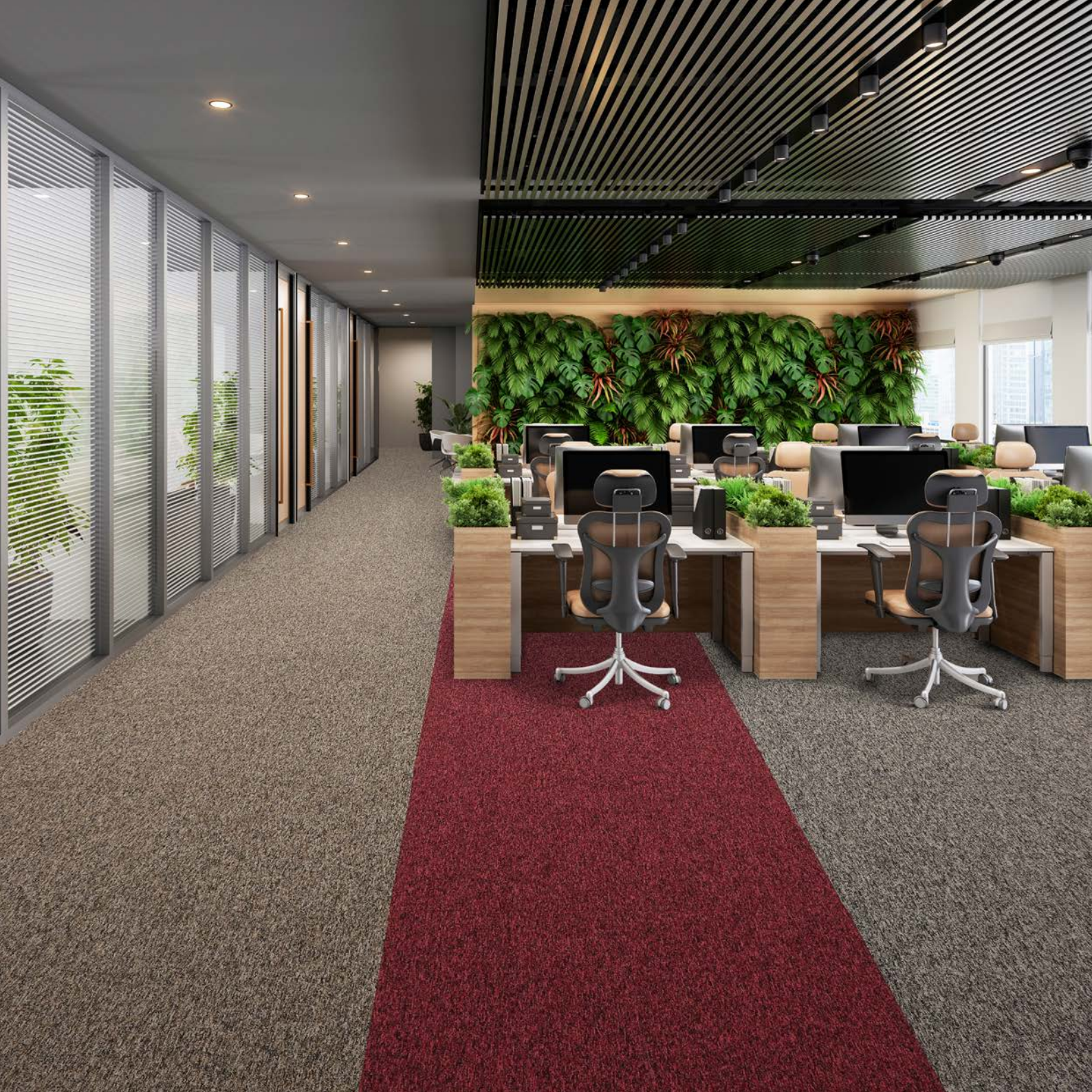
**go to®** offers two designs, sixteen plains and four stripe options. The range of colours has been increased to create this attractively practical, versatile and flexible palette.

**go to®** has a proven track record of high performance and resilience that **Burmatex®** carpet tiles are known for. This core level loop range is the go to choice for use

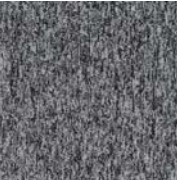
## eco<sub>2</sub>matters®

**go to®** uses **EgoCycle® 75 recycled** solution dyed nylon. This, combined with our **BioBase® recycled** backing produces a **low carbon** update to this reliable product range.





34705 ice mineral



34701 slate grey



34702 silver salt



34703 stone shadow



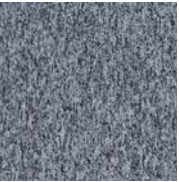
34704 gravel greige



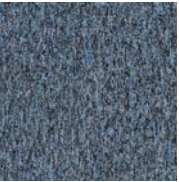
34706 quartz sand



34707 sepia fusion



34712 cold cove



34708 cyan flux



34709 base blue



34710 navy element



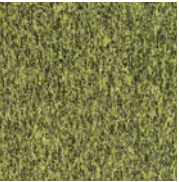
34716 purple prism



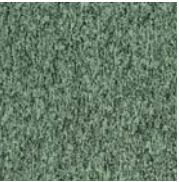
34715 cherry shade



34711 bronze brown



34713 ultra yellow

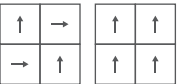


34714 jade layer



#### Specification

Product Description: **Low Carbon** Level Loop  
Pile Yarn Description: 100% **Econyl® regenerated recyclable** solution dyed nylon  
Tile Dimensions: 50 cm x 50 cm  
Pile Height: 4.3 mm  
Total Thickness: 6.8 mm  
Pile Weight: 550 g/m²  
Tufts per m²: 177,165/m²  
Castor Chair Rating: BS EN 985 Pass  
Body Voltage Test: BS ISO 63562000 <2kV  
Colour Fastness To Light: Minimum grade 6  
Flammability: Euroclass Bfl-s1



# infinity®

**infinity®** is a 550g level loop pile carpet tile collection of 16 shades, inspired by flecked textures and colours found in raw materials and nature. Visual inspiration from rocks, gemstones, coastlines, and minerals help to create the individual aspect of this heavy commercial range. This specific characteristic of the tile provides excellent soil hiding properties..

## eco<sub>2</sub>matters®

Made from 100% Econyl® **regenerated recyclable** solution dyed nylon yarn and our unique **BioBase® recycled** backing, **infinity®** is **low carbon** and a considered choice for sustainable building projects.

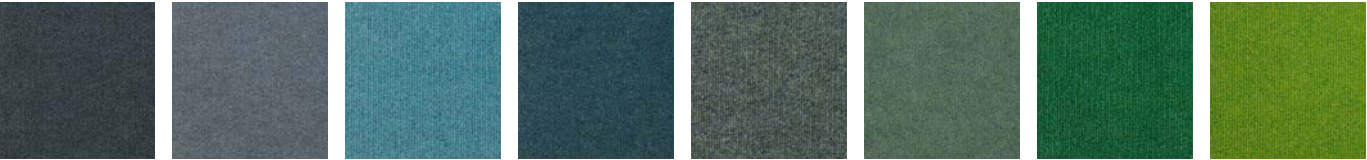




Q. 12031 tacoma tan  
□ 12131 cuban rum  
Q. 12032 atlanta beige  
□ 12132 belgian beige  
Q. 12034 austin clay  
□ 12134 latvian honey  
Q. 12001 nashville slate  
□ 12101 indian ebony  
Q. 12002 chicago grey  
□ 12102 danish charcoal  
Q. 12003 pittsburgh steel  
□ 12103 netherlands slate  
Q. 12005 little rock  
□ 12105 canadian diamond



Q. 12011 erie blue  
□ 12111 andorran blue  
Q. 12017 san francisco bay  
□ 12117 norwegian fjord  
Q. 12004 houston blue  
□ 12104 german steel  
Q. 12080 dallas heat  
□ 12180 japanese indigo  
Q. 12012 san diago sapphire  
□ 12112 portuguese purple  
Q. 12013 minneapolis mauve  
□ 12113 luxembourg lavender  
Q. 12081 grand rapids  
□ 12181 russian blue



Q. 12008 seattle blue  
□ 12108 icelandic sea  
Q. 12019 portland blue  
□ 12119 swiss ice  
Q. 12082 amarillo sky  
□ 12182 brazilian sky  
Q. 12022 omaha opal  
□ 12122 chinese turquoise  
Q. 12025 augusta green  
□ 12125 monaco marina  
Q. 12023 miami jade  
□ 12123 greek jade  
Q. 12083 moreno valley  
□ 12183 colombian emerald  
Q. 12030 los angeles lime  
□ 12130 lithuanian lime



Q. 12051 cincinnati red  
□ 12151 spanish sunset  
Q. 12039 orlando orange  
□ 12139 ukrainian orange  
Q. 12087 aurora gold  
□ 12187 bolivian gold  
Q. 12088 fresno sun  
□ 12188 costa rican sun  
Q. 12084 charlotte boulevard  
□ 12184 australian violet  
Q. 12043 arlington rose  
□ 12143 chilean wine  
Q. 12085 baton rouge  
□ 12185 hungarian paprika  
Q. 12086 providence pink  
□ 12186 cambodian silk



Specification Q.

**Product Description:** Fibre Bonded  
**Pile Yarn Description:** 85% Polypropylene 15% Nylon  
**Roll Length:** 30m  
**Roll Width:** 2m  
**Total Thickness:** 6.0 mm  
**Total Weight:** 950 g/m<sup>2</sup>  
**Castor Chair Rating:** BS EN 985 Pass  
**Body Voltage Test:** BS ISO 6356:2000 <2kV  
**Colour Fastness To Light:** Minimum grade 6  
**Flammability:** Euroclass Efl-s1

Q. roll 4200 sidewalk  
□ tile cordiale



Specification □

**Product Description:** Fibre Bonded  
**Pile Yarn Description:** 85% Polypropylene 15% Nylon  
**Tile Dimensions:** 50 cm x 50 cm  
**Total Thickness:** 7.8 mm  
**Pile Weight:** 950 g/m<sup>2</sup>  
**Castor Chair Rating:** BS EN 985 Pass  
**Body Voltage Test:** BS ISO 6356:2000 <2kV  
**Colour Fastness To Light:** Minimum grade 6  
**Flammability:** Euroclass Bfl-s1



# cordiale

**cordiale** is an extremely durable fine ribbed fibre bonded carpet tile. It is ideally suited for schools, public buildings and commercial offices. Made from a high performance mix of solution dyed fibres, it is available in a range of 32 vibrant colours.

# 4200

**4200** is an extremely durable fine ribbed fibre bonded carpet sheet. It is ideally suited for schools, public buildings and commercial offices. Made from a high performance mix of solution dyed fibres, it is available in a range of 32 vibrant colours.





							
Q. 11531 buffalo brown □ 11831 rishworth brown	Q. 11532 harlem beige □ 11832 buckingham beige	Q. 11534 rockland stone □ 11834 hereford stone	Q. 11501 edison slate □ 11801 sedburgh slate	Q. 11502 oregon grey □ 11802 gresham grey	Q. 11503 lexington grey □ 11803 gordonstoun grey	Q. 11505 waldorf grey □ 11805 sherborne grey	Q. 11514 virginia blue □ 11814 oriel blue
							
Q. 11511 newark blue □ 11811 repton blue	Q. 11517 bowery blue □ 11817 winchester blue	Q. 11504 staten steel □ 11804 durham steel	Q. 11580 dutchess purple □ 11880 exeter indigo	Q. 11512 bergen sapphire □ 11812 stamford sapphire	Q. 11513 new york mauve □ 11813 malvern mauve	Q. 11581 richmond blue □ 11813 strathallan blue	Q. 11507 montana blue □ 11807 kings navy
							
Q. 11508 hudson blue □ 11808 marlborough blue	Q. 11519 new haven blue □ 11819 bradfield blue	Q. 11582 long island sky □ 11882 dover teal	Q. 11522 washington jade □ 11822 harrow green	Q. 11525 madison marine □ 11825 rossall jade	Q. 11523 newburgh jade □ 11823 monmouth moss	Q. 11583 litchfield green □ 11883 ackworth green	Q. 11530 colorado lime □ 11830 loretto lime
							
Q. 11551 saratoga red □ 11851 rugby red	Q. 11539 florida flame □ 11839 oundle orange	Q. 11587 westchester gold □ 11887 epsom gold	Q. 11588 syracuse sun □ 11888 kingsmead gold	Q. 11584 queens purple □ 11884 wellington purple	Q. 11543 texas rose □ 11843 keble rose	Q. 11585 cortland rouge □ 11885 rougemont red	Q. 11586 trenton pink □ 11886 dulwich pink



Specification Q.

**Product Description:** Fibre Bonded  
**Pile Yarn Description:** 85% Polypropylene 15% Nylon  
**Roll Length:** 30m  
**Roll Width:** 2m  
**Total Thickness:** 6.5 mm  
**Total Weight:** 940 g/m<sup>2</sup>  
**Castor Chair Rating:** BS EN 985 Pass  
**Body Voltage Test:** BS ISO 6356:2000 <2kV  
**Colour Fastness To Light:** Minimum grade 6  
**Flammability:** Euroclass Bfl-s1

Q. roll 4200 sidewalk  
□ tile cordiale



Specification □

**Product Description:** Fibre Bonded  
**Pile Yarn Description:** 85% Polypropylene 15% Nylon  
**Tile Dimensions:** 50 cm x 50 cm  
**Total Thickness:** 7.8 mm  
**Pile Weight:** 940 g/m<sup>2</sup>  
**Castor Chair Rating:** BS EN 985 Pass  
**Body Voltage Test:** BS ISO 6356:2000 <2kV  
**Colour Fastness To Light:** Minimum grade 6  
**Flammability:** Euroclass Bfl-s1



# academy<sup>®</sup>

**academy<sup>®</sup>** is an extremely durable broad ribbed fibre bonded carpet tile and is particularly suited for public buildings, such as schools, and other commercial interiors. Made from a high performance mix of solution dyed fibres, it is available in a wide range of 32 exciting colourways.

## 4400

**4400** is an extremely durable broad ribbed fibre bonded carpet sheet and is particularly suited for public buildings, such as schools, and other commercial interiors. Made from a high performance mix of solution dyed fibres, it is available in a wide range of 32 exciting colourways.





6070 yakama slate 6040 armenian grey 6050 norman steel 6023 iceni blue 6060 barona blue 6081 bavarian blue 6028 saxon blue



6056 spartan mauve 6061 skydancer 6036 phoenician green 6083 norse green 6045 trojan green 6055 dorian azure 6082 mayan sky



6022 assyrian jade 6066 navajo mauve 6090 persian purple 6062 red lake



Specification

**Product Description:** Fibre Bonded  
**Pile Yarn Description:** 85% Polypropylene 15% Nylon  
**Roll Length:** 30m  
**Roll Width:** 2m  
**Total Thickness:** 6.5 mm  
**Total Weight:** 1150 g/m<sup>2</sup>  
**Castor Chair Rating:** BS EN 985 Pass  
**Body Voltage Test:** BS ISO 6356:2000 <2kV  
**Colour Fastness To Light:** Minimum grade 6  
**Flammability:** Euroclass Dfl-s1

Specification

**Product Description:** Fibre Bonded  
**Pile Yarn Description:** 85% Polypropylene 15% Nylon  
**Tile Dimensions:** 50 cm x 50 cm  
**Total Thickness:** 10 mm  
**Pile Weight:** 1200 g/m<sup>2</sup>  
**Castor Chair Rating:** BS EN 985 Pass  
**Body Voltage Test:** BS ISO 6356:2000 <2kV  
**Colour Fastness To Light:** Minimum grade 6  
**Flammability:** Euroclass Bfl-s1



# velour excel

**velour excel** is an extremely durable fibre bonded carpet tile, ideally suited for public buildings, such as schools, and other commercial interiors. Made from a high performance mix of solution dyed fibres, it is available in a choice of 18 attractive colourways.

# 5500 luxury

**5500** is an extremely durable fibre bonded carpet sheet, ideally suited for public buildings, such as schools, and other commercial interiors. Made from a high performance mix of solution dyed fibres, it is available in a choice of 18 attractive colourways.





1834 soap stone



1891 pewter cloud



1805 diamond dust



1803 concrete jungle



1802 zinc asphalt



1801 carbon steel



1809 ink stone



1814 blue monday



1813 lavender oil



1890 purple emperor



1886 pink diamond



1812 indigo snake



1882 turquoise mountain



1883 emerald coast



1830 lime street



1887 gold quest



1839 mandarin duck

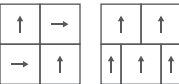


1845 scarlet runner



#### Specification

**Product Description:** Structure Bonded®  
**Pile Yarn Description:** 85% Polypropylene 15% Nylon  
**Tile Dimensions:** 50 cm x 50 cm  
**Total Thickness:** 7.8 mm  
**Pile Weight:** 950 g/m²  
**Castor Chair Rating:** BS EN 985 Pass  
**Body Voltage Test:** BS ISO 6356:2000 <2kV  
**Colour Fastness To Light:** Minimum grade 6  
**Flammability:** Euroclass Bfl-s1



# lateral®

**lateral®** is the definitive product offering for all commercial interiors, schools, public buildings, residential schemes and design and build projects. **lateral®**'s ground-breaking design stems from our innovative, structure bonded manufacturing technology using an unusual mix of textures from cut through to loop pile. It is available in a range of 18 colours.

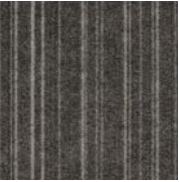
## eco<sub>2</sub>matters®

Made from anti fray and anti ravel technology with our unique **BioBase® recycled** backing, **lateral®** is **low carbon** and a considered choice for sustainable building projects.





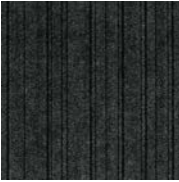
12912 cool stone



12926 pewter track



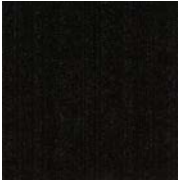
12930 diamond coal



12906 metal shock



12928 night suede



12929 pitch black



12923 ink film



12927 blue reef



12924 lavender seed



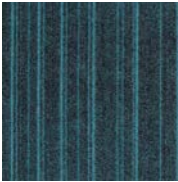
12920 deep purple



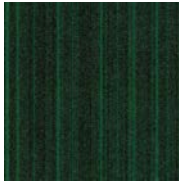
12916 pink panther



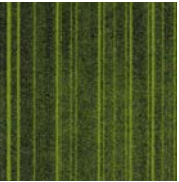
12931 indigo stack



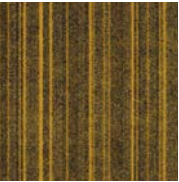
12922 turquoise opal



12925 emerald city



12902 lime zest



12918 rolled gold



12901 sun burst



12904 scarlet fever



BioBase®  
backing



anti fray  
anti ravel



low  
carbon

#### Specification

**Product Description:** Structure Bonded®

**Pile Yarn Description:** 85% Polypropylene 15% Nylon

**Tile Dimensions:** 50 cm x 50 cm

**Total Thickness:** 8.0 mm

**Pile Weight:** 1000 g/m²

**Castor Chair Rating:** BS EN 985 Pass

**Body Voltage Test:** BS ISO 6356:2000 <2kV

**Colour Fastness To Light:** Minimum grade 6

**Flammability:** Euroclass Bfl-s1



## code

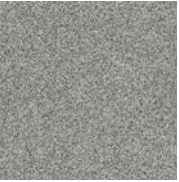
**code** is the next generation in structure-bonded® design, evolving from the technology that created lateral®.

**code** uses subtle contrasting stripes of colour and texture for a stylish defined look. Combine **code** with zip and lateral® to produce a unique floor design.

## eco<sub>2</sub>matters®

Made from anti fray and anti ravel technology with our unique **BioBase® recycled** backing, **code®** is **low carbon** and a considered choice for sustainable building projects.

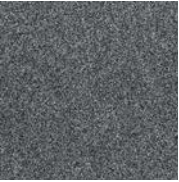




33201 cloud



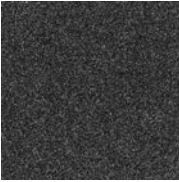
33202 pearl



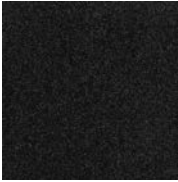
33203 pebble



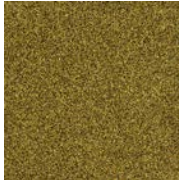
33204 shale



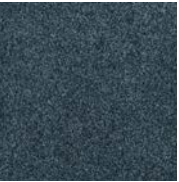
33205 mussel



33206 gull



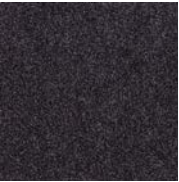
33207 gorse



33208 surf



33209 wave



33210 heather



#### Specification

**Product Description:** Cut Pile  
**Pile Yarn Description:** 100% Solution Dyed Aquafil Econyl® Nylon (Polyamide-PA)  
**Tile Dimensions:** 50 cm x 50 cm  
**Pile Height:** 7 mm  
**Total Thickness:** 9.5 mm  
**Pile Weight:** 1300 g/m<sup>2</sup>  
**Tufts per m<sup>2</sup>:** 1 65,354/m<sup>2</sup>  
**Castor Chair Rating:** BS EN 985 Pass  
**Body Voltage Test:** BS ISO 6356:2000 <2kV  
**Colour Fastness To Light:** Minimum grade 6  
**Flammability:** Euroclass Bfl-s1



## origin®

**origin®** is a sophisticated and plush range, working as a stand-alone product as well as with other carpet tiles in our collection, such as **osaka®**, **rainfall®** and **alaska®**.

The new colouration of **origin®** was inspired by coastal themes and forecasted colour trends. Organic and natural, the colour palette is usable, classic and clean. Looking to the colour names chosen, you can clearly see the oceanic inspiration: fresh and crisp surf, deep and dramatic wave, smooth pebble and atmospheric cloud, to name a few in the palette of 10.

## eco<sub>2</sub>matters®

Made from 100% Econyl® **regenerated recyclable** solution dyed nylon yarn and our unique **BioBase® recycled** backing, **origin®** is **low carbon** and a considered choice for sustainable building projects.





18701 graphite



18702 graphite stripe



18704 sterling



18705 sterling stripe



18707 cobalt



18708 cobalt stripe



#### Specification

**Product Description:** Performance Barrier System  
**Pile Yarn Description:** 100% Solution Dyed Nylon (Polyamide-PA)  
**Tile Dimensions:** 50 cm x 50 cm  
**Total Thickness:** 10.0 mm  
**Pile Weight:** 920 g/m<sup>2</sup>  
**Tufts per m<sup>2</sup>:** 110.236/m<sup>2</sup>  
**Castor Chair Rating:** BS EN 985 Pass  
**Body Voltage Test:** BS ISO 6356:2000 <2kV  
**Colour Fastness To Light:** Minimum grade 6  
**Flammability:** Euroclass Bfl-s1



## armour

**armour** uses the latest yarn technology to maximise moisture absorption, actively scrape away dirt, and provide heavy duty performance. This enables **armour** to remove up to 90% of the dirt and moisture tracked into a building, making it the ideal choice for entrance areas, lobbies, lifts and staircases. Use **armour** to make the right first impression, and to protect your interior flooring finishes.

## eco<sub>2</sub>matters®

Made from 100% Econyl® **regenerated recyclable** solution dyed nylon yarn and our unique **BioBase® recycled** backing, **armour** is **low carbon** and a considered choice for sustainable building projects.





withstands  
heavy traffic



protects



withstands  
heavy traffic



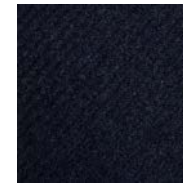
protects



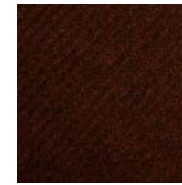
BioBase®  
backing



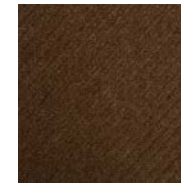
1440 grey



1428 blue



1439 brown



1446 fawn



1436 green

#### Specification

**Product Description:** Fibre Bonded

**Pile Yarn Description:** 100% Polypropylene

**Roll Length:** 30m

**Roll Width:** 2m

**Total Thickness:** 10.0 mm +/-10%

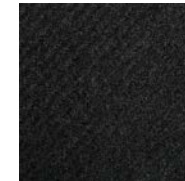
**Total Weight:** 1490 g/m² +/-10%

**Colour Fastness To Light:** Minimum grade 6

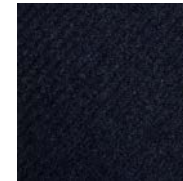
**Flammability:** Euroclass Efl-s1

## 7700 grimebuster

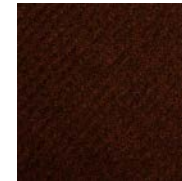
**7700 grimebuster** is a heavy contract ribbed fibre bonded carpet. It is ideal for withstanding heavy footfall environments and creating an effective dirt barrier for busy entrances, which lead directly from outside environments.



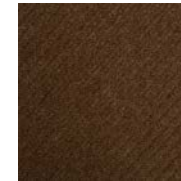
1640 newmarket grey



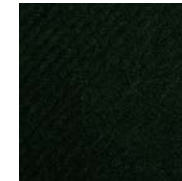
1628 haydock blue



1639 goodwood brown



1646 wincanton fawn



1636 curragh green

#### Specification



**Product Description:** Fibre Bonded

**Pile Yarn Description:** 100% Polypropylene

**Tile Dimensions:** 50 cm x 50 cm

**Total Thickness:** 12.0 mm

**Pile Weight:** 1170 g/m²

**Total Weight:** 4300 g/m²

**Colour Fastness To Light:** Minimum grade 6

**Flammability:** Euroclass Bfl-s1

## grimebuster 50

**grimebuster 50** is a heavy contract fibre bonded carpet tile with a deep diagonal rib surface.

It is ideal for withstanding heavy footfall environments and creating an effective dirt barrier for busy entrances, which lead directly from outside environments.





withstands  
heavy traffic



protects



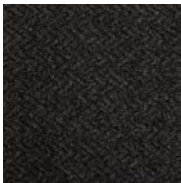
withstands  
heavy traffic



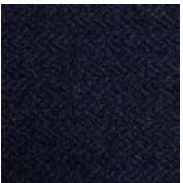
protects



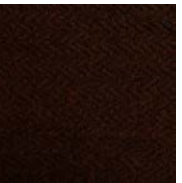
BioBase®  
backing



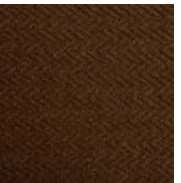
7840 charcoal



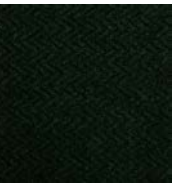
7828 blue



7839 brown



7846 fawn



7836 green

fibre bonded

#### Specification

**Product Description:** Fibre Bonded

**Pile Yarn Description:** 100% Polypropylene

**Roll Length:** 30m

**Roll Width:** 2m

**Total Thickness:** 10.0 mm +/-10%

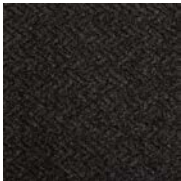
**Total Weight:** 1490 g/m² +/-10%

**Colour Fastness To Light:** Minimum grade 6

**Flammability:** Euroclass EF-s1

## 7800 chevrolay

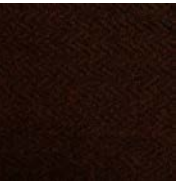
**7800 chevrolay** is a heavy contract chevron ribbed fibre bonded carpet. It is ideal for withstanding heavy footfall environments and creating an effective dirt barrier for busy entrances, which lead directly from outside environments.



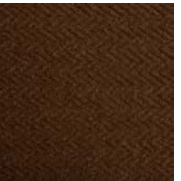
6240 alpha grey



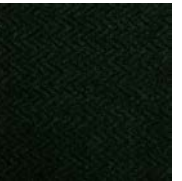
6228 beta blue



6239 theta brown



6246 kappa fawn



6236 gamma green



#### Specification

**Product Description:** Fibre Bonded

**Pile Yarn Description:** 100% Polypropylene

**Tile Dimensions:** 50 cm x 50 cm

**Total Thickness:** 12.0 mm

**Pile Weight:** 1490 g/m²

**Total Weight:** 4300 g/m²

**Colour Fastness To Light:** Minimum grade 6

**Flammability:** Euroclass BF-s1

## chevrolay 50

**chevrolay 50** is a heavy contract chevron ribbed fibre bonded tile with deep chevron design.

It is ideal for withstanding heavy footfall environments and creating an effective dirt barrier for busy entrances, which lead directly from outside environments.



characteristics of the products

Name	Dimensions Rolls (R) / Tiles (T)	Product Type	Pile Description	Carpet Pile Weight g/m²	Tile Total Weight g/m²	Carpet Pile Height mm	Tile Total Thickness mm	Number of tufts x/m²	Backing	Flammability EN13501	Impact Noise	Number of SKUs	Suitable for Underfloor Heating	Body Voltage kV	Wear Classification	Colour Fastness to Light BS EN ISO 105	Slip Resistant	Castor Chair EN985	Carbon Status	EPD Registration Number
arctic*	T 50cm × 50cm P 25 cm x 100 cm	Multilevel Loop	100% Nylon 6 carbon negative recycled yarn	624	4024	4.5	7	226,771	BioBase®	Bfl-S1	26 dB	12	Yes below 27°	<2.0	Class 33	>6	NPD	Pass	Carbon Neutral*	S-P-07852
alaska*	T 50cm × 50cm	Multilevel Loop	100% Ecomyl Nylon	800	4200	5	7.5	226,771	BioBase®	Bfl-S1	22 dB	12	Yes below 27°	<2.0	Class 33	>6	NPD	Pass	Low Carbon	S-P-01830
balance grade*	T 50cm × 50cm	Multilevel Loop	100% Nylon 6 (PA)	628	4028	4.5	7	226,771	BioBase®	Bfl-S1	23 dB	12	Yes below 27°	<2.0	Class 33	>6	NPD	Pass	Carbon Neutral*	S-P-08172
balance grid*	T 50cm × 50cm	Multilevel Loop	100% Nylon 6 (PA)	628	4028	4.5	7	226,771	BioBase®	Bfl-S1	23 dB	12	Yes below 27°	<2.0	Class 33	>6	NPD	Pass	Carbon Neutral*	S-P-08172
balance ground*	T 50cm × 50cm	Multilevel Loop	100% Nylon 6 (PA)	628	4028	4.5	7	226,771	BioBase®	Bfl-S1	23 dB	12	Yes below 27°	<2.0	Class 33	>6	NPD	Pass	Carbon Neutral*	S-P-08172
dapple*	T 50cm × 50cm	Multilevel Loop	100% Nylon 6 (PA)	678	4100	5.2	7	236,220	BioBase®	Bfl-S1	24 dB	12	Yes below 27°	<2.0	Class 33	>6	NPD	Pass	Carbon Neutral*	S-P-08169
osaka*	T 50cm × 50cm	Multilevel Loop	100% Nylon 6 carbon negative recycled yarn	695	4100	5	7.5	226,771	BioBase®	Bfl-S1	22 dB	12	Yes below 27°	<2.0	Class 33	>6	NPD	Pass	Carbon Neutral*	S-P-01831
vibe*	T 50cm × 50cm	Multilevel Loop	100% Nylon 6 (PA)	774	4180	5	7.5	250,393	BioBase®	Bfl-S1	25 dB	12	Yes below 27°	<2.0	Class 33	>6	NPD	Pass	Low Carbon	S-P-08171
tiltnturn*	T 50cm × 50cm	Multilevel Loop	100% Nylon 6 (PA)	770	4200	5	7.5	259,842	BioBase®	Bfl-S1	25 dB	12	Yes below 27°	<2.0	Class 33	>6	NPD	Pass	Low Carbon	S-P-08170
rainfall*	T 50cm × 50cm	Multilevel Loop	100% Ecomyl Nylon	910	4300	5	7.5	236,220	BioBase®	Bfl-S1	24 dB	12	Yes below 27°	<2.0	Class 33	>6	NPD	Pass	Low Carbon	S-P-01832
tivoli*	T 50cm × 50cm P 25 cm x 100 cm	Level Loop	100% Nylon(PA)	600	4050	4	6.5	196,500	BioBase®	Bfl-S1	23 dB	38	Yes below 27°	<2.0	Class 33	>6	NPD	Pass	Low Carbon	S-P-01825
tivoli mist*	T 50cm × 50cm P 25 cm x 100 cm	Level Loop	100% Nylon(PA)	600	4050	4	6.5	196,500	BioBase®	Bfl-S1	23 dB	38	Yes below 27°	<2.0	Class 33	>6	NPD	Pass	Low Carbon	S-P-01825
go to*	T 50cm × 50cm	Level Loop	EcoCycle® 75 recycled solution dyed nylon	500	3810	3.0	5.5	196,850	BioBase®	Bfl-S1	20 dB	20	Yes below 27°	<2.0	Class 33	>6	NPD	Pass	Low Carbon	S-P-08174
infinity*	T 50cm × 50cm	Level Loop	100% Ecomyl Nylon	550	4000	4.3	6.8	177,165	BioBase®	Bfl-S1	23 dB	16	Yes below 27°	<2.0	Class 33	>6	NPD	Pass	Low Carbon	S-P-01827
cordiale	T 50cm × 50cm	Fibre Bonded Tile	85%PP 15%PA	950	4200	6	7.8	-	BioBase®	Bfl-S1	18 dB	32	Yes below 27°	<2.0	HC	>6	NPD	Pass	Low Carbon	S-P-01835
4200 sidewalk	R 2m × 30m	Fibre Bonded Sheet	85%PP 15%PA	950	950	6	-	-	Uniform	Bfl-S1	18 dB	32	Yes below 27°	<2.0	HC	>6	NPD	Pass	Low Carbon	S-P-01843
4200 sidewalkFR	R 2m × 30m	Fibre Bonded Sheet	85%PP 15%PA	950	950	6	-	-	Uniform	Bfl-S1	18 dB	32	Yes below 27°	<2.0	HC	>6	NPD	Pass	Low Carbon	S-P-01843
academy*	T 50cm × 50cm	Fibre Bonded Tile	85%PP 15%PA	975	4200	6.5	7.8	-	BioBase®	Bfl-S1	21 dB	32	Yes below 27°	<2.0	HC	>6	NPD	Pass	Low Carbon	S-P-01835
4400 broadway	R 2m × 30m	Fibre Bonded Sheet	85%PP 15%PA	940	940	6.5	-	-	Uniform	Bfl-S1	19 dB	32	Yes below 27°	<2.0	HC	>6	NPD	Pass	Low Carbon	S-P-01843
4400 broadwayFR	R 2m × 30m	Fibre Bonded Sheet	85%PP 15%PA	940	940	6.5	-	-	Uniform	Bfl-S1	19 dB	32	Yes below 27°	<2.0	HC	>6	NPD	Pass	Low Carbon	S-P-01843
velour excel	T 50cm × 50cm	Fibre Bonded Tile	85%PP 15%PA	1200	4900	8	10	-	BioBase®	Bfl-S1	21 dB	18	Yes below 27°	<2.0	HC	>6	NPD	Pass	Low Carbon	S-P-01836
5500 luxury	R 2m × 30m	Fibre Bonded Sheet	85%PP 15%PA	1150	1150	6.5	-	-	Uniform	Dfl-S1	21 dB	18	Yes below 27°	<2.0	HC	>6	NPD	Pass	Low Carbon	S-P-01844
lateral*	T 50cm × 50cm	Structure Bonded	85%PP 15%PA	950	4200	5.5*	7.8	-	BioBase®	Bfl-S1	18 dB	18	Yes below 27°	<2.0	HC	>6	NPD	Pass	Low Carbon	S-P-01837
code	T 50cm × 50cm	Structure Bonded	85%PP 15%PA	1000	4250	5.5*	8	-	BioBase®	Bfl-S1	17 dB	11	Yes below 27°	<2.0	HC	>6	NPD	Pass	Low Carbon	S-P-01838
origin*	T 50cm × 50cm	Cut Pile	100% Ecomyl Nylon	1300	4550	7	9.5	165,354	BioBase®	Bfl-S1	28 dB	10	Yes below 27°	<2.0	Class 33	>6	NPD	Pass	Low Carbon	S-P-08175

entrance matting




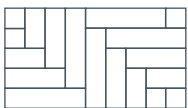
Name	Dimensions Rolls (R) / Tiles (T)	Product Type	Pile Description	Carpet Pile Weight g/m²	Total Weight g/m²	Thickness mm	Backing	Flammability EN13501	Number of SKUs	Wear Classification	Colour Fastness to Light BS EN ISO 105	Slip Resistant	Carbon Status	EPD Registration Number
armour	T 50cm × 50cm	Cut Pile	100%PA	920	4500	10	BioBase®	Bfl-S1	6	Class 33	>6	DS	Low Carbon	S-P-01833
7700 grimebuster	R 2m × 30m	Fibre Bonded Sheet	100% PP	-	1490	10	Uniform	Efl-S1	5	HC	>6	NPD	Low Carbon	S-P-01845
grimebuster 50	T 50cm × 50cm	Fibre Bonded Tile	100% PP	1490	4300	12	BioBase®	Bfl-S1	5	HC	>6	NPD	Low Carbon	S-P-01840
7800 chevrolay	R 2m × 30m	Fibre Bonded Sheet	100% PP	-	1490	10	Uniform	Efl-S1	5	HC	>6	NPD	Low Carbon	S-P-01845
chevrolay 50	T 50cm × 50cm	Fibre Bonded Tile	100% PP	1490	4300	12	BioBase®	Bfl-S1	5	HC	>6	NPD	Low Carbon	S-P-01840

\* Made from Universal Fibers® Thrive® matter yarn, the world's first carbon negative recycled yarn, and our unique BioBase® recycled backing.

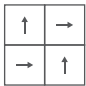
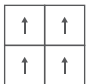
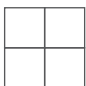
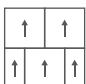
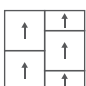
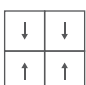
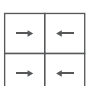

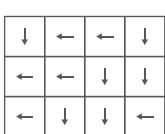


# Installation

## Plank installation methods

Monolithic	
Half Drop	
Random Drop	
Herringbone	

## Tile installation methods

Quarter Turn	
Monolithic	
Random	
Brick	
Half Drop	
Alternate rows rotated 180°	
Alternate tiles rotated 180°	
Large Quarter Turn	
Parquet	

# Appendix

2	Burnatex®	39	cordiale
7	arctic	39	4200
9	alaska	41	academy
11	balance grade	41	4400
13	balance grid	43	velour excel
15	balance ground	43	5500 luxury
17	dapple	45	lateral
19	osaka	47	code
21	vibe	49	origin
23	tiltnturn	51	armour
25	rainfall	53	7700 grimebuster
27	tivoli tile	53	grimebuster 50
31	tivoli plank	55	7800 chevrolay
33	tivoli mist	55	chevrolay 50
35	go to	56	characteristics of the products
37	infinity	58	installation



# Burmatex®

MANUFACTURERS OF CREATIVE FLOORING 

## Head Office

Victoria Mills, The Green  
Ossett  
West Yorkshire  
WF5 0AN  
United Kingdom

Tel: +44 (0) 1924 262525  
Fax: +44 (0) 1924 280033  
Email: [projects@burmatex.co.uk](mailto:projects@burmatex.co.uk)  
Web: [www.burmatex.co.uk](http://www.burmatex.co.uk)

## International Enquires

[international@burmatex.co.uk](mailto:international@burmatex.co.uk)

## Eastern Europe Office

Burmatex  
Andersia Business Centre  
Plac Andersa 7  
61-894 Poznań, Poland

Tel: + 48 61 668 3883  
Mob: + 48 603 548 074  
Mob: + 48 696 057 065  
email: [biuro@burmatex.pl](mailto:biuro@burmatex.pl)

**eco<sub>2</sub>matters®**